

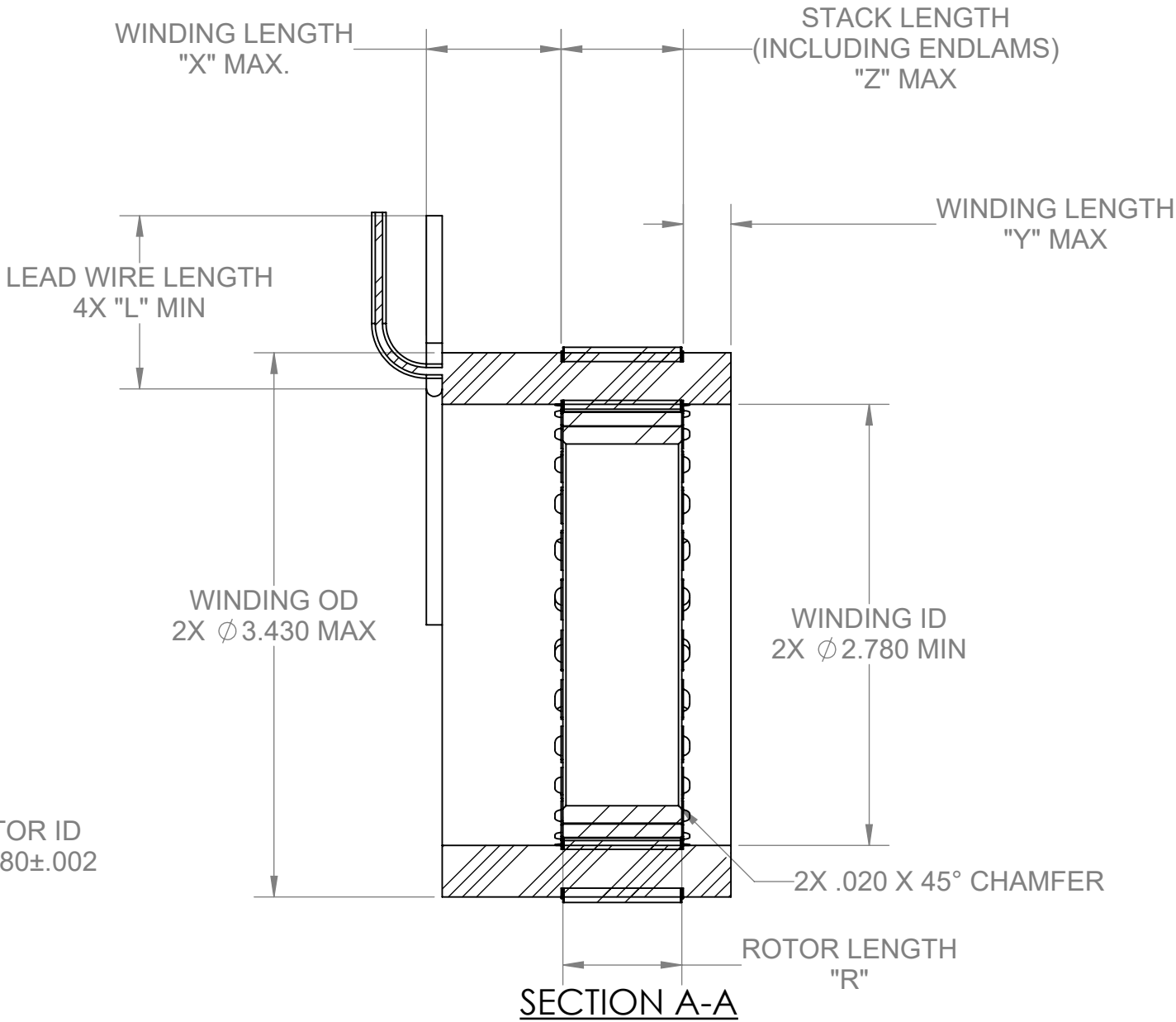
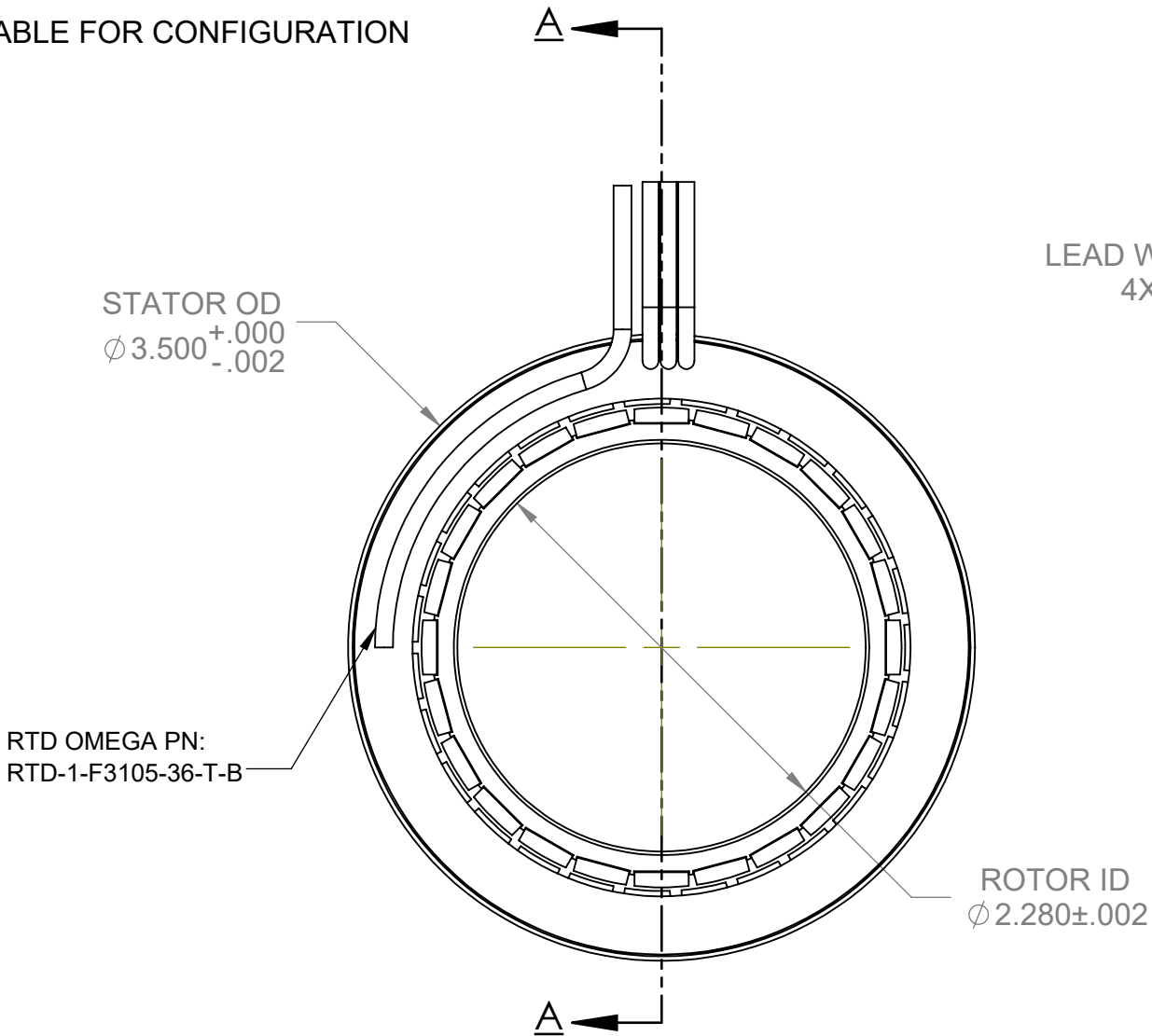
PROPRIETARY STATEMENT: THIS DOCUMENT CONTAINS CONFIDENTIAL INFORMATION PROPRIETARY TO AVEOX, INC. IT MAY NOT BE DUPLICATED IN WHOLE OR IN PART, DISCLOSED TO UNAUTHORIZED PERSONS, OR USED IN THE MANUFACTURE OF PARTS, ASSEMBLIES, OR FOR MANUFACTURING PROCESSES DEFINED HEREIN, WITHOUT PRIOR WRITTEN PERMISSION FROM AVEOX, INC.

REVISIONS			
REV.	DESCRIPTION	DATE	APPROVED
A	INITIAL RELEASE PER ERN # 8190	11/30/2020	SEE ECO APPROVAL

NOTES: (UNLESS OTHERWISE SPECIFIED)

1.
- STATOR LEAD WIRE PER M22759/11
PHASE A: RED
PHASE B: WHITE
PHASE C: BLACK

2.
- SEE TABLE FOR CONFIGURATION




UNLESS OTHERWISE SPECIFIED: DIMENSIONS ARE IN INCHES			CONTRACT No.		AVEOX, INC. 2265A Ward Avenue Simi Valley, CA. 93065 805-915-0200 (Phone) 805-915-0201 (FAX)			
TOLERANCE ON ANGLE: ±0.5° ON DECIMALS: INCH MILLIMETER SURFACE(μin.) .XX ±.01 .X ±.5mm 63/ .XXX ±.005 .XX ±.1mm REMOVE ALL BURRS BRAKE CORNERS R.005/.010. INTERPRET DRAWING PER ASME Y14.5-2009 DO NOT SCALE DRAWING DIMENSIONS APPLY AFTER SURFACE FINISH			APPROVALS		DATE		TITLE:	
			DRAWN		E. NG		11/18/20	
			CHECK					
			ENGINEER					
THIRD ANGLE PROJECTION 			SIZE		CAGE CODE		DWG No.	
			B		1C2S2		6100394-XX	
			SCALE: NONE		CALC. WEIGHT:		SHEET 1 OF 2	
							REV A	

PROPRIETARY STATEMENT: THIS DOCUMENT CONTAINS CONFIDENTIAL INFORMATION PROPRIETARY TO AVEOX, INC.
IT MAY NOT BE DUPLICATED IN WHOLE OR IN PART, DISCLOSED TO UNAUTHORIZED PERSONS, OR USED IN THE MANUFACTURE
OF PARTS, ASSEMBLIES, OR FOR MANUFACTURING PROCESSES DEFINED HEREIN, WITHOUT PRIOR WRITTEN PERMISSION FROM AVEOX, INC.

REVISION HISTORY			
REV.	DESCRIPTION	DATE	APPROVED
-	SEE SHEET 1	-	-

PART NUMBER 2	DESCRIPTION	ROTOR LENGTH "R"	LEAD WIRE AWG	LEAD WIRE LENGTH "L"	STACK LENGTH "Z" INCLUDING ENDLAM	ENDTURN HEIGHT, LEAD SIDE "X"	ENDTURN HEIGHT, BOTTOM "Y"
6100394-01	O&M DRAWING, STATOR AND ROTOR SET, UT-3507-24P/3, SENSORLESS	0.750	12	12	0.81	0.6	0.3
6100394-02	O&M DRAWING, STATOR AND ROTOR SET, UT-3510-24P/3, SENSORLESS	1.000	12	12	1.06	0.6	0.3
6100394-03	O&M DRAWING, STATOR AND ROTOR SET, UT-3512-24P/3, SENSORLESS	1.250	12	12	1.31	0.6	0.3
6100394-04	O&M DRAWING, STATOR AND ROTOR SET, UT-3515-24P/3, SENSORLESS	1.500	12	12	1.56	0.6	0.3
6100394-05	O&M DRAWING, STATOR AND ROTOR SET, UT-3520-24P/3, SENSORLESS	2.000	12	12	2.06	0.6	0.3



2265A Ward Avenue Simi Valley, CA. 93065
805-915-0200 (Phone) 805-915-0201 (FAX)

AVEOX, INC.

TITLE:

O&M DRAWING, STATOR AND ROTOR SET, UT-3500-24P/3, SENSORLESS TABULATED

SIZE

B

CAGE CODE

1C2S2

DWG No.

6100394-XX

REV

A

SCALE: NONE

SHEET 2 OF 2

FORM: 6890115-02 Rev. C